

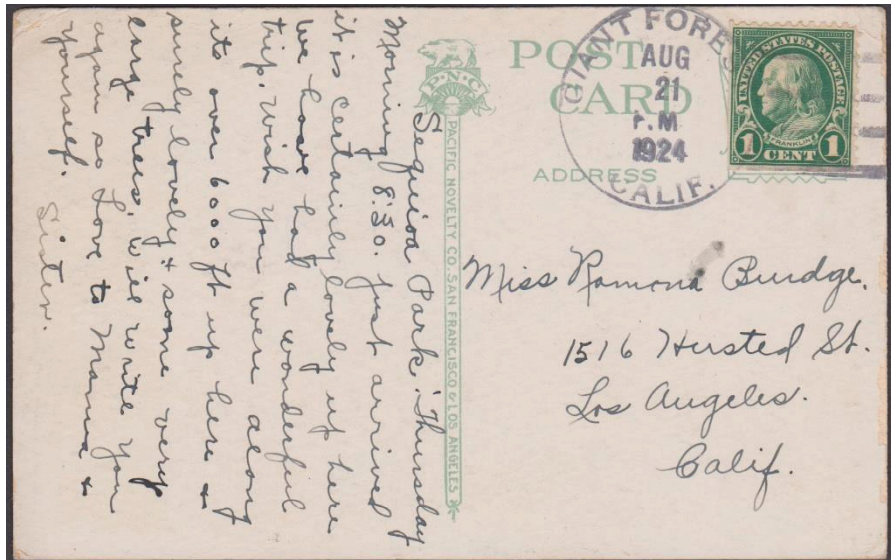
The Giant Forest, CA Post Office

By Patrick Crosby

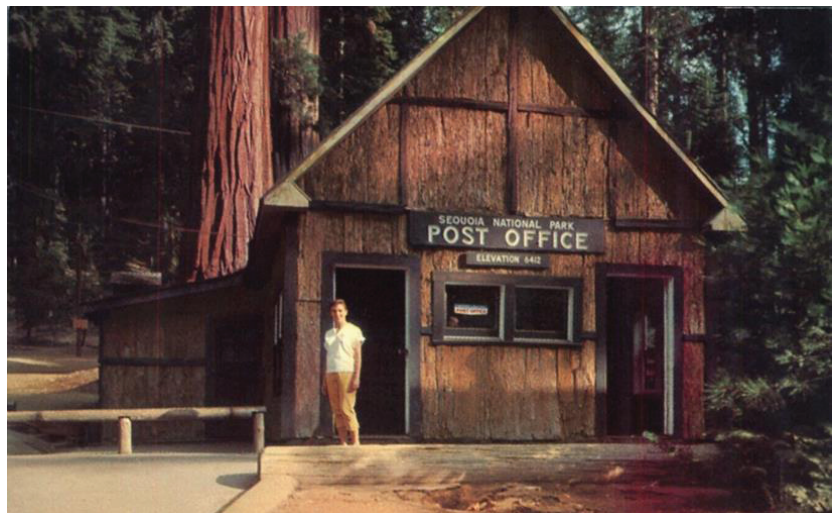
Sister writes this postcard and mails it at the Giant Forest, CA, post office saying "...some very large trees." Well, Yea! How about the most massive tree species in the world – the giant sequoia! And how about right there in Giant Forest the largest living thing in the world – the General Sherman tree!

I saw the featured postcard online and checked "Giant Forest, CA" to see if it was a DPO (discontinued post office). Sure, enough it is, with a couple of post office dating sources showing the office was only open 1915-1918, making it a fairly scarce postmark. But this postcard shows a 1924 four-bars handstamp. Contemporary U.S. Postal Bulletins show the post office name was changed from Giant Forest, CA, to Sequoia National Park, CA, effective April 16, 1927. They also show the post office opening most years on June 1st and closing on September 30th. In the off season any remaining mail was transferred 40 miles down the Sierra west slope to the Lemoncove (also Lemon Cove), CA, post office. During seasonal operations there was a Star Route Service contractor who transported the mail between Giant Forest and Lemoncove. For example, E.L. Haskin was contracted for: both ways, 6 days a week, from July 1, 1922, to June 30, 1926 at \$1260 per annum. He was paid extra for large weight amounts and would have carried this post card.

The Giant Forest name refers to 1,880 acres inside Sequoia National Park which host easy access to giant sequoia tree groves and includes 40 miles of hiking trails. At one time there were 300 buildings in this favorite visitor area. But it was determined all the commercial activity was detrimental to the long-term health of the trees. Now the Giant Forest is a day use area with only 4 buildings.



It seems the sender picked up this hand-colored card of the Kern River before driving up into the Sierras and Sequoia National Park.



The Giant Forest post office was previously named Ranger, CA, established in March 1907, with the name changed to Giant Forest, CA, on December 23, 1915.



The Giant Forest coffee shop and post office. Also stores, a lodge and many cabins were once all together for the convenience of visitors.

Between the years 1995 and 2000 earlier buildings were demolished with accommodations and other commercial activity moving to Giant Forest Village Camp Kaweah Historic District just to the west, then the accommodations again to Wuksachi Village 7 miles north. The post office, still named Sequoia National Park, CA, moved to Lodgepole Village about 5 miles north.

References:

- [The Daily Postal Bulletin](http://www.uspostal-bulletins.com) (Washington, DC) (especially issues 10926, 12851, 14331 www.uspostal-bulletins.com)
- [En.Wikipedia.org](http://en.wikipedia.org) (searched especially Giant Forest)
- [National Park Maps](http://NationalParkMaps.com), npsmaps.com
- Historical Map Archive, albamamaps.ua.edu
- postalhistory.com, U.S. Post Offices
- Helbock, Richard, [A Checklist of California Post Offices 1850-1989](#) 2nd edition (La Posta Publications 1992)

Patrick Crosby is a member of the Nevada Stamp Study Society and collects U.S. postal stationery, stamps and postcards with an emphasis on postal history.